

MANUAL RATCHETING SPREADING WEDGE MSW-10



The Spreading Wedge has been developed as the simple cost-effective solution for flange spreading.

The Practical Solution :

The MSW-10 can be used during :

- | | |
|-----------------------|-----------------------|
| • Commissioning | • Shutdowns / Outages |
| • Construction | • Testing |
| • Routine Maintenance | • Valve Change-outs |

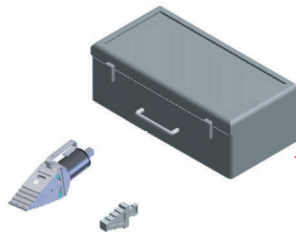
Special Features :

- Only requires an access gap of 1/4"(6 mm).
- Robust Light weight Tool-Just 6.5 kg (14.3 lbs).
- Operated mechanically with reversible ratchet of 3/4".
- Locking at first step ensures no slippage increased safety.

Operating Benefits :

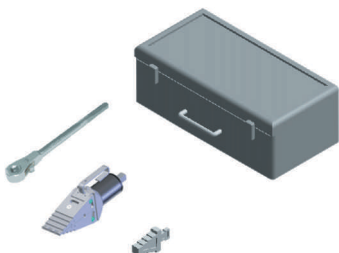
- Time / Cost Savings.
- Lowest Weight / Lifting Force Ratio.
- Precise.
- Easy to set up and use.
- Safe.
- Minimal Maintenance.
- Fast for labour and time savings.

Kit Options :



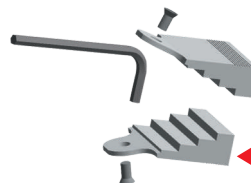
◀ Mini Kit

- 1 x Manual Spreading Wedge Assembly
- 1 x Safety Block
- 1 x Instruction Manual
- 1 x Carry Case



◀ Standard Kit

- 1 x Manual Spreading Wedge Assembly
- 1 x Manual Ratcheting Wrench
- 1 x Safety Block
- 1 x Instruction Manual
- 1 x Carry Case
- Gross Weight: 11 kg



◀ Stepped Block Accessory

- 2 x Stepped Blocks
- 2 x CSK M6 x 12mm Countersunk Screws
- 1 x M4 Allen Key

Sold as a separate item in pairs