

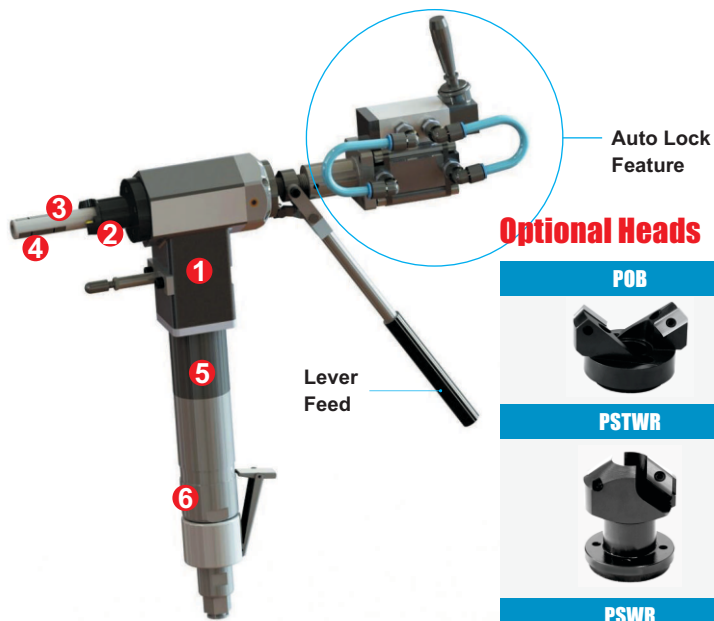
1625 AUTO LOCK LEVER FEED

TUBE / PIPE BEVELLING MACHINE

Light Weight Auto Lock Lever Feed
Tube/Pipe Beveling Machine

Locking Range **12.5mm ID to 42mm ID (1/2" - 1.5/8")**

The FMP-1625 auto lock lever feed is a light weight and compact machine for facing, beveling and weld preparation on all materials including stainless steel, duplex, inconel and others. The auto locking feature dramatically reduces production time. It produces fast, accurate weld preps on any schedule and material of pipe effortlessly within its range. Easy to handle and quick to setup. Used in shutdown environments condensers and heat exchangers, boiler. The FMP-1625 auto lock lever feed comes in 3 different - speed versions (100, 200 and 300 RPM) The lower speed machines develop more torque and are used on larger, thicker and harder tubes.



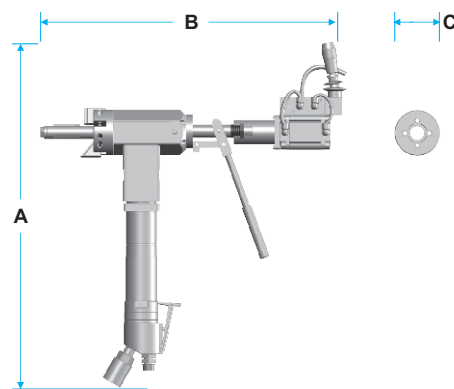
Optional Heads



Table for POB, PSTWR, PSWR
Page 16, 17

Technical Specification

Drive		Pneumatic
Locking Range	mm	12.5 - 42
	(inch)	(1/2" - 1.5/8")
Application Range	mm (inch)	12.5 - 42 (1/2" - 1.5/8")
Free Speed	rpm	120
Torque	Nm (lbf.ft)	38 (28)
Pneumatic Power	HP	0.83
Air Consumption	cfm	15 - 18
Air Pressure	bar (psi)	6 (90)
Body Size (W x H x L)	mm	50 x 400 x 300
Net Weight	kg (lb)	4.8 (10.6)



	FM-1625 Pneumatic (mm)	FM-3000 Pneumatic (mm)
A	490	570
B	410	520
C	67	80

Features

- BODY** - Light weight, high pressure cast aluminum body allows continuous operation under the harshest conditions.
- TOOL HOLDER** - Holds the cutting tool bits tightly at the desired position. Its robust construction and support to the cutting bits ensure vibration free performance.
- FEED SHAFT** - High strength, precise machined and hardened feed shaft provides a strong support to the assembly which slides over it.
- JAW** - Wedge style hardened tool steel mounted jaws for maximum life and secure positioning. Available within the locking range of 12.5mm to 42mm.
- GEAR BOX** - Highly accurately machined for positive power transmission with less noise and no wear and tear.
- PNEUMATIC OR ELECTRIC DRIVE** - High quality pneumatic or electric drive for reliable service and long working life.



Pneumatic

Jaws Set

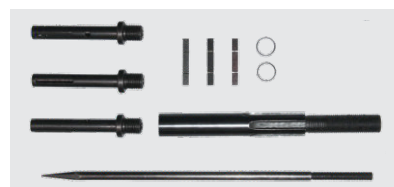
FM-1625 Auto Lock Lever Feed (20-42 mm)



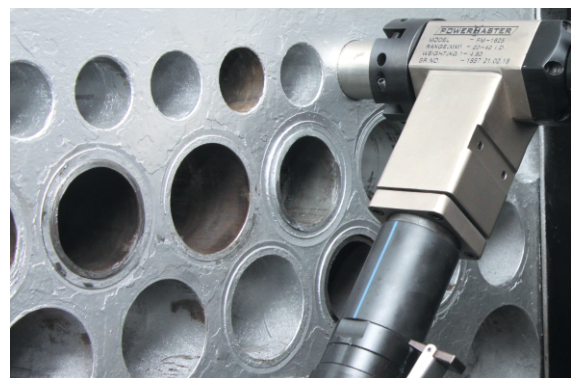
Optional Reduced Shafts

The FM-1625 auto lock lever feed is also available with reduced diameter central shafts allowing its use on following smaller sized tubes:

Shaft Model	Locking Range	
	mm	inch
12.4	12.5 - 15	1/2" - 9/16"
13.9	14 - 18	9/16" - 11/16"
16.9	17 - 21	11/16" - 13/16"
KIT	12.5 - 21	1/2" - 13/16"



▼ It enables precise setup of the tube projection.



Recommended for :
Tube Facing, Tube Bevelling, Weld Preparation